

# 1 ST ANDREW'S ROAD

Artful Administration



**Owner:**  
National Gallery Singapore

**Architects:**  
CPG Consultants Pte Ltd &  
Studio Milou Singapore Pte Ltd

**Engineer:**  
CPG Consultants Pte Ltd

**Contractor:**  
Takenaka Singapore Piling Joint Venture

*Two important historical monuments of Singapore have been respectfully rejuvenated, united physically and in purpose to flourish anew as the National Gallery of Singapore. A historic endeavour in itself, this impressive revival has successfully transformed buildings formerly restricted to government and civic activities into a singularly eminent cultural asset whose hallowed halls the world can soon wander through and enjoy.*



*Former Supreme Court and City Hall adapted and integrated as the new National Gallery Singapore*

## **A Judicious Revival**

A complex restoration, involving a diversity of historic elements, the project has set new standards with its sensitive and scientific approach. Great effort has been placed in understanding the history and memory of the buildings, evident in pivotal spaces such as the Main Lobby and the Rotunda Library of the Former Supreme Court and the City Hall Chambers.

Extensive research and consultation with conservation specialists informed the entire process -- from the robust structural shoring that secured the buildings during work, to the extensive retention of original materials such as the Shanghai plaster, copper domes, teak ceilings, terrazzo finishes, and the historic floor patterns on the second floor of the Supreme Court, as well as the marble flooring on the grand staircase of City Hall. A high quality outcome is also evident on the majestic facades, fenestrations and roofs. The two historical lobbies and four main courtrooms were entirely retained, as was the original profile of the memorable courtyards of City Hall. The team was judicious in observing the 3R principles to ensure the accuracy, and longevity of the final product.

## **Summoning A New Order**

While the restoration has been masterful, it is many inspired interventions of the new that are equal stars of the show. From above, the new roofline is a subtle yet powerful touch that instantly defines the envelope of the new development. As it connects old spaces, it creates exciting new possibilities such as the monumental new central atrium with its pair of link-bridges, and an extensive roof garden with views of the skyline

and main dome. The well-thought-through design complements the monuments, celebrating the memorable courtyards of City Hall and opening up hidden spaces like its roof deck and the internal courtyards of Supreme Court for public enjoyment. The decision to convert the old Rotunda Library into an Art Reference Library cleverly preserves its usage history. The project team is also lauded for their care in discreetly introducing mechanical and electrical services required to meet the stringent standards of a modern-day Gallery.

## **Standing Stalwart**

Extensive research has resulted in sensitive harmonisation of key spaces and restoration of the original fabric and finishes that retains a patina of history. Thoughtful design has opened up, for the first time, significant historical spaces that allow important narratives of the nation's past to have a place in her present and future.



*Original tympanum sculptures at former Supreme Court*



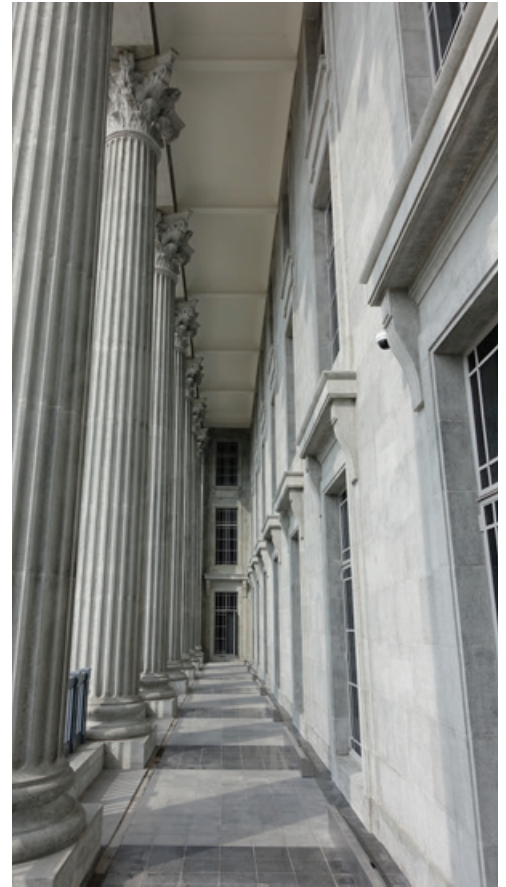
*Shanghai plaster Corinthian capitals of former Supreme Court*



*Remnants of damaged crests retained at former Supreme Court*



*One of the five relief friezes on the porch of former Supreme Court*



*Sensitively restored Shanghai plaster columns and inner façade at former City Hall*



*Original grand lobby at former Supreme Court*



*Restored interior of the Rotunda Library*



*Jail cells at former Supreme Court restored and adapted into gallery space*



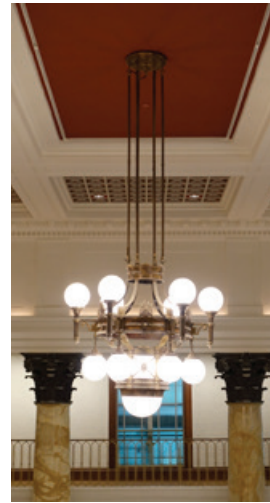
*Time capsule at former Supreme Court*



*Coat of arms on the cabinets at the anteroom of former Chief Justice's Chambers*



*Restored interior of former City Hall Chambers*



*Original chandelier restored*



*Careful treatment of original timber*



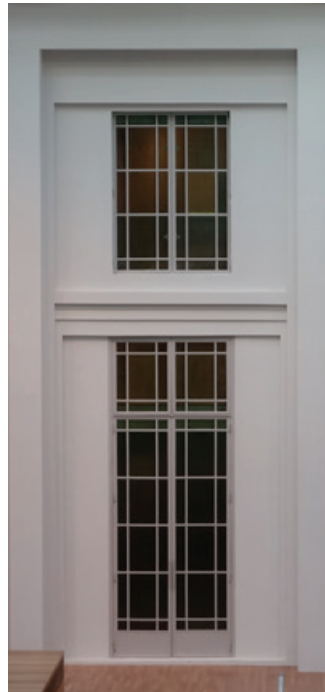
*Polished brass balustrades*



*Decorative capital*



*Courtyard façades of the former City Hall retained*



*Brass door knocker*



*Grand staircase with original marble panelling and steps at former City Hall*